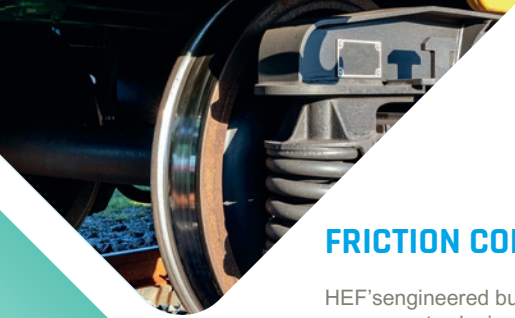


Railway Expertise & Components





FRICTION COMPONENTS

HEF's engineered bushings and friction components are high-performance components designed to withstand demanding conditions, such as high loads, high temperatures, and abrasive environments. These bushings are developed to provide excellent frictional and anti-seizure properties, making them a key choice for railway applications.

Track maintenance



H LINER™



PEL™ OX

Infrastructure railway switching control device

Spherical
PEL™



PEL™



Rolling stock

Braking system
Torsion and anti-rolling bar
Coupling system

H-LINER™ S



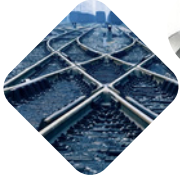
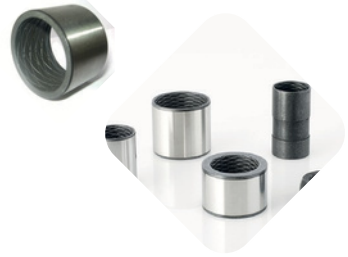
Spherical
PEL™





PELTM LG and HP BUSHINGS

- High dynamic pressure up to 125 MPa
- Good greasing intervals
- Abrasion and seizure resistance



PELTM BH BUSHINGS

- Very high dynamic pressure up to 250MPa
- Long greasing intervals
- Abrasion and seizure resistance

H-LINERTM Self-lubricating composite bushings

- High dynamic pressure up to 140Pa
- Extended lifetime
- Abrasion resistance with H-Liner® with lips: patented bushings with integrated seals



PELTM Spherical bushings

- Seizure resistance
- Long greasing intervals
- Shhock resistance
- Extended lifetime



Tribology: Testing and R&D

- 60 Tribologists and R&D engineers
- More than 30 test benches
- Customizable tribometers
- Failure mode analysis: On site appraisal, SEM, 3D surface profile,...
- Studies in special environment: Cryogenic, High temperature, water, oil, grease,...
- More than 3000 studies in various industries



CLIN™

THERMOCHEMICAL SURFACE TREATMENT FOR TRIBOLOGICAL APPLICATIONS

CLIN™ technologies represent the liquid nitrocarburizing treatments offered by the HEF group. The CLIN™ family includes all the ARCORA®, TENIFER®, SURSULF®, QPQ®, TUFFTRIDE®, NUTRIDE®, MELONITE® brands, processes developed and patented by HEF. These treatments benefit from the circular economy thanks to ECO-CLIN™.

DOOR SYSTEM

ENDLESS SCREW FOR TRAIN SLIDING DOORS

HEF solution:

- CLINTM (ARCORA V2)
- PHOSPHATING + SDA 0 LF
(phosphate 3~4µm / total thickness with SDA 10~20µm)

Example of specification :

- Steel: 40Cr
- Diffusion: 0.3 ~0.4 mm
- NSST: >96h
- Hardness: >650HV0.1



Backing plate = support of brake pad/lining

BRAKING SYSTEM

COMPONENTS FOR TRAIN

HEF solution:

- CLINTM (ARCORA VG)

Example of requirements :

- Corrosion resistance
- Wear resistance
- Adhesion (final painting step)
- Bending strength

HVAC

SCROLL COMPRESSOR COMPONENT FOR TRAIN

HEF solution:

- CLINTM (ARCORA V2)
- PHOSPHATING

Example of requirements :

- Material: cast iron (FGL)
- Corrosion resistance
- Wear resistance
- Low distortion



Fixed & orbiting scroll

Contact

HEF & TS USA Headquarters

937-323-2556

[EMAIL: sales-admin@hefusa.net](mailto:sales-admin@hefusa.net)

hef-na.com

